



CHEMI CURE

TUBELESS TIRE REPAIR

"Choice of the professionals for over 45 years."

MOMAX SALES, INC.

Ozark, MO 65721

1-800-237-4931 order desk

www.momaxsales.com

"KING OF THE STRAND REPAIR"

REPAIRS ALL TUBELESS TIRES INCLUDING THE STEEL BELTED RADIAL

Manufactured in the USA

CHEMI CURE is Economical, Easy to use and a Permanent repair. All you need is the kit and the closed eye inserting tool. The tool is made for exact measurements for each length repair.

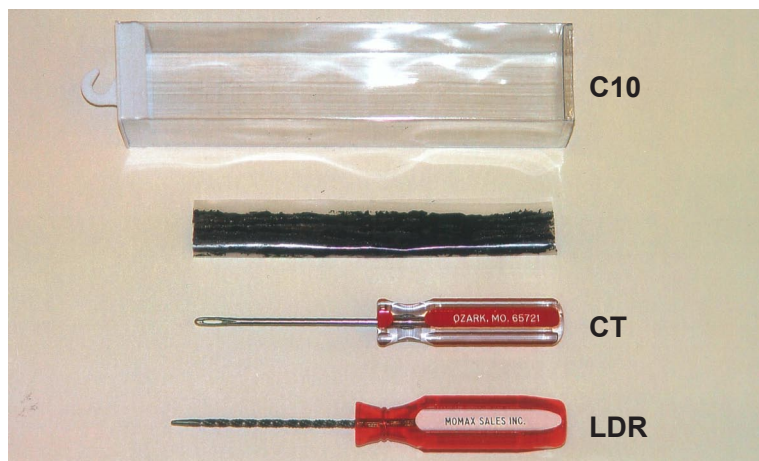
CHEMI CURE, used correctly, molds to fit the injury, cures into and becomes part of the tire.

CHEMI CURE will repair the tread, shoulder or sidewall of a bias ply tire and the tread of the radial ply tire.

The C10 Kit repairs 2 & 4 ply tires. The T10 kit repairs tires 6 ply or more, up to and including farm implement and heavy equipment.

TUBELESS TIRE REPAIR

ITEM #	DESCRIPTION	BOX QTY.
C10	7", 177 mm Repairs for 2 & 4 ply tires.	10
T10	14", 355 mm Repairs for 6 ply & up tires	10



INSERTING TOOLS

CT	Car Tool (Closed Eye)
TT	Truck Tool (Closed Eye)

RASP/REAMER

HDR	Heavy Duty (.210", 5.3 mm dia)
LDR	Light Duty (.145", 3.7 mm dia)

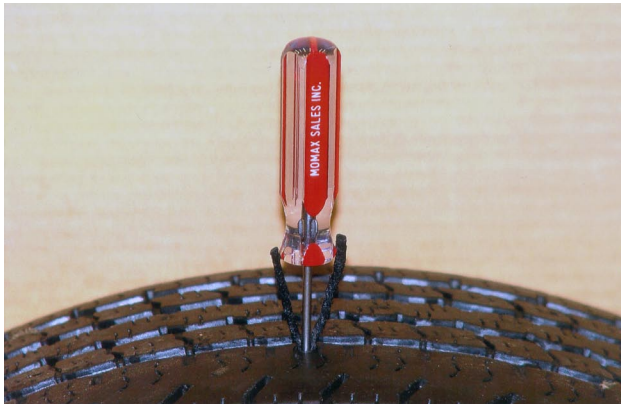




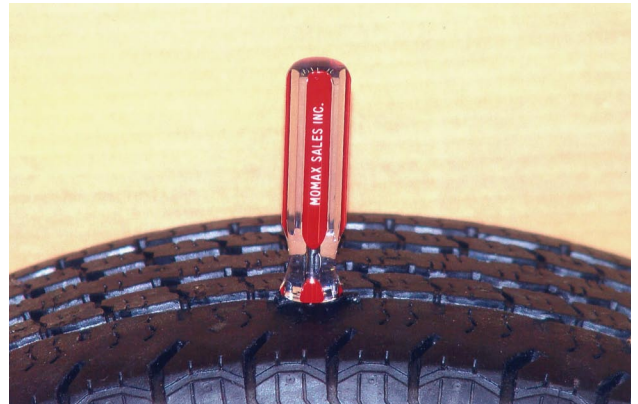
1. TO THREAD TOOL: Put a strand into eye of tool and with thumb and index finger slide tool eye to the center of the strand.



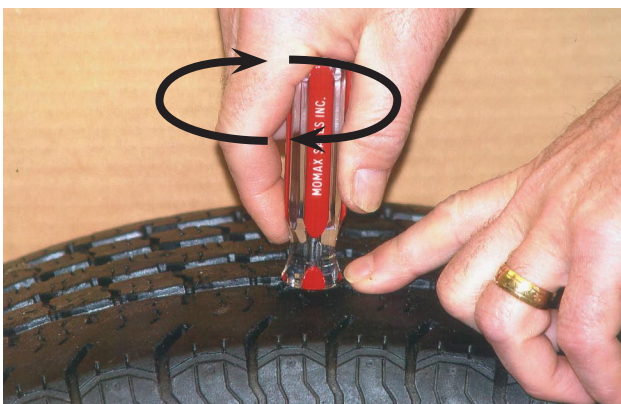
2. Examine the shape of the injury. Use the LDR or HDR to clean out the injury and find the path of the injury.



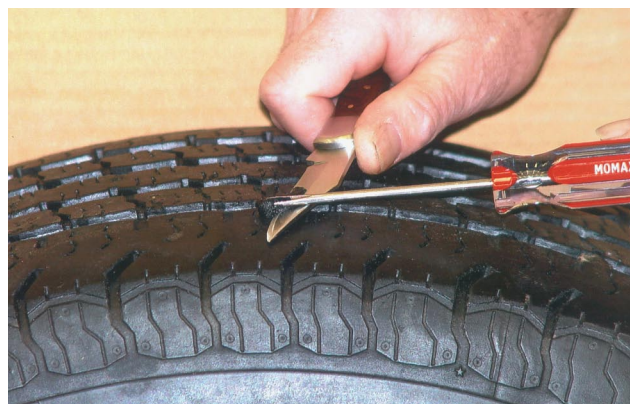
3. ROUND HOLE: Hold both ends of the strands against one side of the tool. Insert tool slowly all the way into the puncture...
CUT: Hold the strand on each side of the tool, in a V-shape. Insert slowly (do not twist on a cut.) Continue with step six.



4. ...until handle is flush with the tire.
(CHEMI CURE can also be used for rim leaks.)



5. Turn tool one and one half turns (three twists).



6. Withdraw tool slowly just until the end of the tool clears the tire. Cut repair flush with tire surface.