

TIRE RACKING | TIRE CONVEYOR | AUTOMATIC WHEEL WASHER
TIRE & WHEEL DISPLAY | INFLATION SAFETY CAGE
TIRE HANDLING EQUIPMENT | TIRE INFLATION TOOLS



**TIRE EQUIPMENT
MANUFACTURER**


MARTINS
I N D U S T R I E S



MARTINS INDUSTRIES

At Martins Industries, we are one of the only tire equipment and racking manufacturer in the world to sell products directly to the end user. As a result, our prices are lower and we are in the best position to advise you: You are dealing with the manufacturer! If you are a tire manufacturer, logistics centre, tire distributor, car dealership or tire shop, you can count on us. With our distribution centres in United States, Canada and Australia, along with manufacturing plants in Canada and Taiwan, you're in good hands. Just call us or go to our web site at www.martinsindustries.com



State of the art manufacturing facility



Engineering & Design Team



Workstations of new products development and prototyping



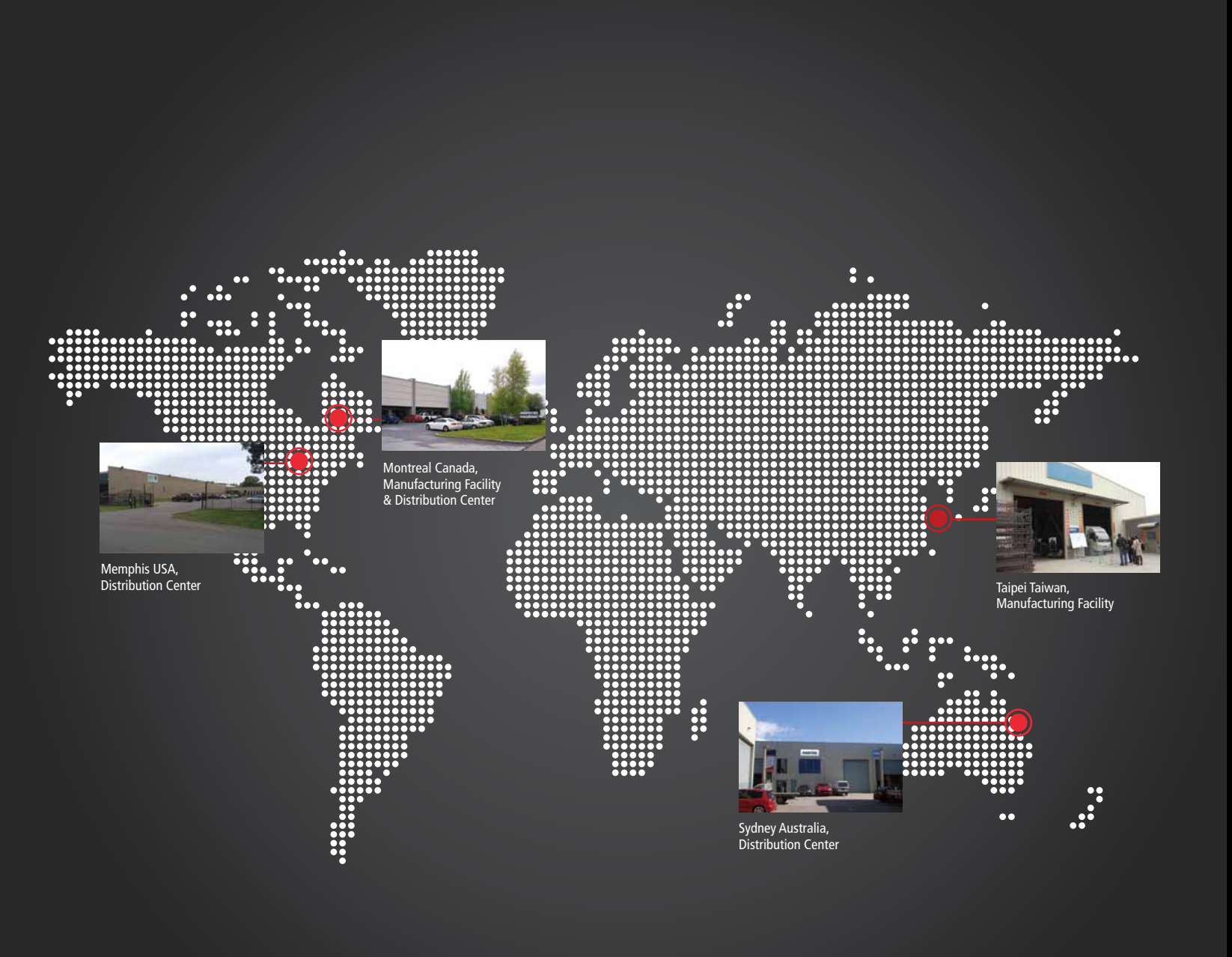
Baked Powder coating paint facility



Robotic welding for standard products and large projects



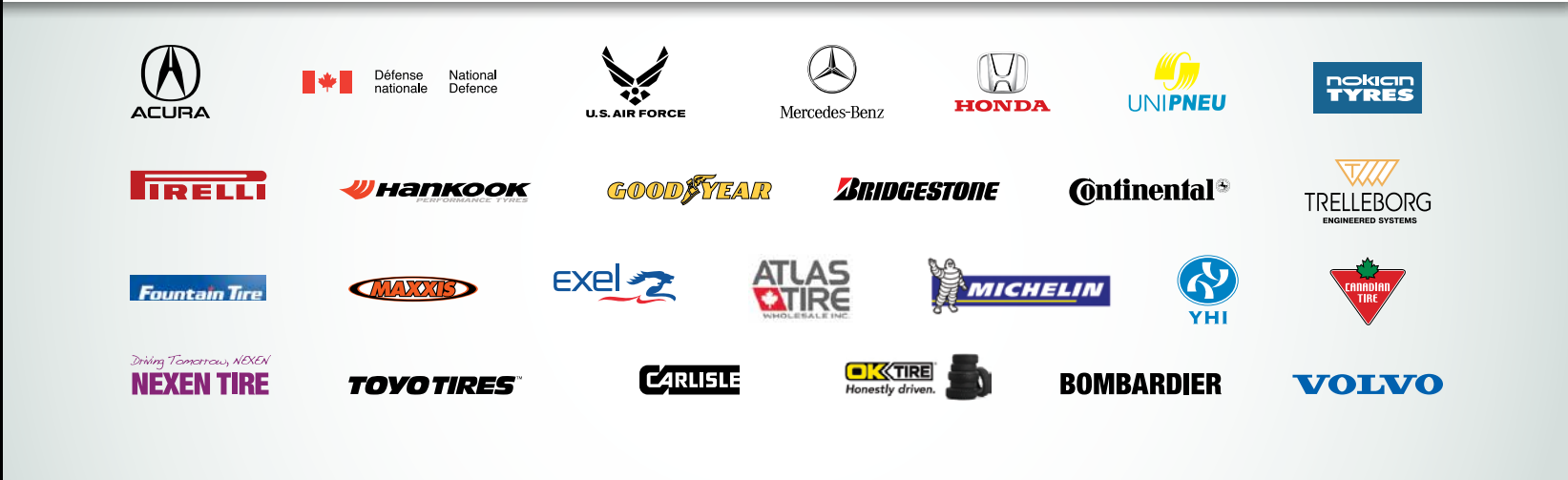
Distribution center for finish goods



COMPANY MISSION STATEMENT

Martins Industries, a source of inspiration for our customers and employees, designs, manufactures and distributes directly to the end users innovative, efficient and cost-effective tire equipment that enhance the productivity, mobility and safety of employees and customers alike.

1.866.409.RACK
WWW.MARTINSINDUSTRIES.COM





LOYALTY,
DISCIPLINE,
INTEGRITY,
PERSEVERANCE,
MOTIVATION,
REPRESENT MARTINS
INDUSTRIES' CORE BELIEFS.



BEFORE



AFTER

MARTINS INDUSTRIES' TEAM



Martin, sales



Josée, logistic



Jean-Michel, production



Yannick, sales



Jean-François, sales



Lorenzo, sales



Philippe, plant manager



Isabelle, customer service



Maria, sales



Karin & Nelson, QC, Taiwan



Martins' Balloon Ride

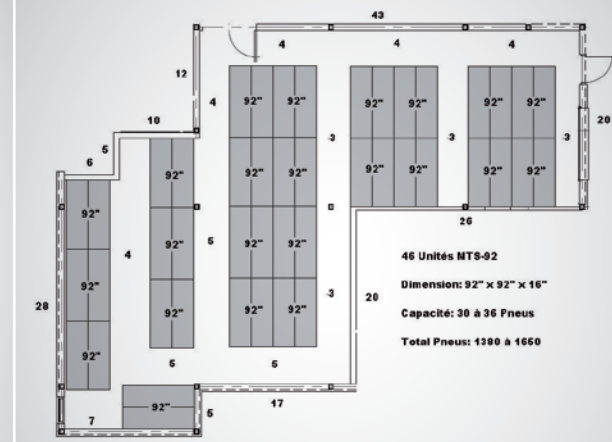
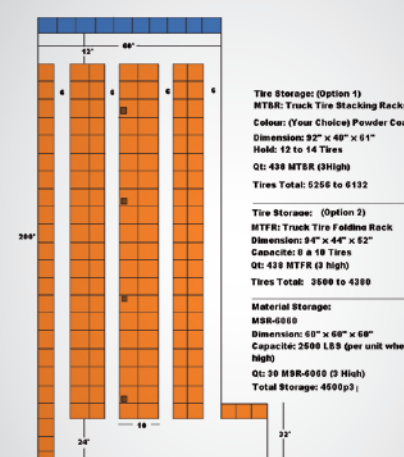
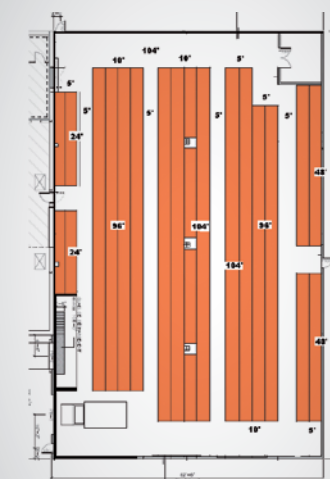


Martins' Hockey Team

WAREHOUSE LAYOUT CONSULTING

Contact us before choosing a tire warehousing system. Over the years, Martins Industries has acquired a wealth of experience with tire manufacturers, distribution centres, wholesalers and shops. As a result, our technicians are well acquainted with the best practices in the industry. We can help you in several ways:

- Martins Industries' technical representatives can help you find the right storage system based on your situation and needs. Working with your warehouse space, your tire volume, your equipment and your financial resources, our technicians will guide you in **selecting the right racks and handling system for you.**
- Martins Industries **works with you to create warehouse plans** for your tire storage. Using data or existing plans, we identify the most efficient layout, at no charge. Very often, our technical representatives come up with a plan that allows you to store more tires per square foot, thus avoiding the considerable costs involved in building, expanding or purchasing unnecessary mezzanines.
- Martins Industries can also work with your organization's health and safety department, your building insurer, the fire department or the workers' health and safety agency in your region in order to **facilitate the integration of changes to your warehouse.** Our technicians will be happy to come to your facility to assist in the process.





DESIGN AND PROTOTYPING

DESIGN	FABRICATION

Martins Industries can design custom tire racks, carts and displays specifically for your company, whether you have a warehouse with special requirements or you are a marketing group looking to create an image. The following are the most common steps involved in the custom design and manufacturing process:

- Meet with your company's representatives to talk about the field of application and offer advice in our area of expertise.
- Produce and present 3-D design drawings.
- Revise the drawings based on your observations and obtain approval.
- Produce one to four prototype units and have users test them.
- Make adjustments to design drawings and carry out volume production.

MANUFACTURING TO YOUR SPECIFICATIONS

Martins Industries bids and manufactures based on technical specifications. If you are already using a tire rack, cart or display that we don't have in our standard product line, we can bid on it and manufacture it for less. If you send us a drawing, a photo or the rack itself, we can make an offer and ship it from whichever of our plants is located closest to your facility. We have done so for many different products and many different large companies.

TIRE RACKING FOR PASSENGER & SUV

FOLDING & STACKING TIRE RACK	P.8
DOLLY FOR FOLDING & STACKING TIRE RACK	P.8
60" X 60" STACKING TIRE RACK	P.9
60" X 60" STACKING TIRE RACK WIRE MESH DECKING	P.9
72" X 72" STACKING TIRE RACK	P.10
LACED TIRE STACKING RACK	P.10
WALLMOUNT TIRE RACK	P.11
TRANSPORT & SHIPPING TIRE RACK	P.11
3, 4 & 5 TIER ADJUSTABLE TIRE SHELVING	P.12



FOLDING & STACKING TIRE RACK

PRODUCT NUMBER: MLTFD



SPECIFICATIONS

DIMENSIONS (L x W x H)	71 1/2" X 49 1/2" X 68 1/2" 1816 X 1257 X 1740 mm
TIRE CAPACITY	28 to 50
LOAD CAPACITY	2400 lb. / 1100 kg
MAX. STACKED (OPEN)	5
MAX. STACKED (CLOSED)	22
WEIGHT	250 lb. / 113 kg
COLOUR	Many options

DESCRIPTION MLTFD

The passenger and light truck folding rack is much more versatile than the pallet racking or mezzanines used all too often in tire warehouses. These portable modular racks are easy to stack and move around with a forklift: 2 can be moved at once when filled with tires, and 10 when empty and folded down. Moreover, they help you quickly and simply rearrange your floor space, and require less handling time than pallet racking.

Each rack can hold 28 to 32 tires stored on their treads. Thus, each tire is easily accessible and different tire makes, sizes and types can be stored in the same rack. With the four middle bars removed, 40 to 50 interlaced tires can be stored. This configuration accommodates the greatest number of tires per square foot (35% more than on treads). However, it is usually better, though not necessary, that tires be of the same type when interlaced because access to the bottom of the rack is limited. This type of storage is a highly economical solution for large volumes.

The passenger and light truck rack can be folded down to reduce shipping costs and save floor space during slow periods. When folded down, 80% of the storage space is regained and racks can be stacked 20 high. Many tire distribution centres and warehouses keep a dozen passenger and light truck racks folded down at the loading dock in addition to a few that are kept open to quickly unload incoming tire shipments.

DOLLY FOR FOLDING & STACKING TIRE RACK

PRODUCT NUMBER: MLTFD-D



SPECIFICATIONS

DIMENSIONS (L x W x H)	47 5/8" X 69 3/8" X 9 1/2" 1210 X 1762 X 241 mm
LOAD CAPACITY	1 280 lb. / 580 kg
WEIGHT	50 lb. / 23 kg
COLOUR	Black

DESCRIPTION MLTFD-D

This simple platform can be used to manually move the passenger and light truck folding rack (MLTFD). The dolly is perfect for areas that are not easily accessible by forklift or pallet truck. Tire shop may also use it to move display racks outside the building. MLTFD legs fit into the dolly to secure the rack in place and the dolly can then be easily moved by virtue of its hard 6" rubber swivels and rigid wheels.

60" X 60" STACKING TIRE RACK

PRODUCT NUMBER: MSR-6060



SPECIFICATIONS

DIMENSIONS (L x W x H)	60" X 60" X 60" 1524 X 1524 X 1524 mm
TIRE CAPACITY	24 to 32
LOAD CAPACITY	2400lb. / 1100kg
MAX. STACKED (OPEN)	5
MAX. STACKED (CLOSED)	20
WEIGHT	115 lb. / 52 kg
COLOUR	Many options

DESCRIPTION MSR-6060

The passenger and light truck stacking rack can be used for stacked storage of all types of passenger and light truck tires. The 60" x 60" deck is designed to hold 4 or 5 stacks of 7 or 8 tires, depending on tire diameter. For tires measuring 16" and under, 5 stacks can be stored per pallet, and for tires measuring 17" and over, 4 stacks. This is one of the most economical tire storage systems, particularly in terms of initial outlay. It is also the most popular storage system in the United States. In addition, this modular rack system can be used to meet a number of other (stack rack) warehousing requirements.

60" X 60" STACKING TIRE RACK WIRE MESH DECKING

PRODUCT NUMBER: MSR-6060WM

SPECIFICATIONS

DIMENSIONS (L x W x H)	60" X 60" X 60" 1524 X 1524 X 1524 mm
TIRE CAPACITY	24 to 32
LOAD CAPACITY	2400lb. / 1100 kg
MAX. STACKED (OPEN)	5
MAX. STACKED (CLOSED)	20
WEIGHT	140 lb. / 64 kg
COLOUR	Many options

DESCRIPTION MSR-6060WM

The passenger and light truck stacking rack wire mesh has the same system as the MSR-6060, the difference is that it is equipped with wire mesh decking. The wire mesh decking prevents injuries from happening when employees step on the rack to pick up tires. The MSR-6060WM can be used for stacked storage of all types of passenger and light truck tires. The 60" x 60" deck is designed to hold 4 or 5 stacks of 7 or 8 tires, depending on tire diameter. For tires measuring 16" and under, 5 stacks can be stored per pallet, and for tires measuring 17" and over, 4 stacks. This is one of the most economical tire storage systems, particularly in terms of initial outlay. It is also the most popular storage system in the United States. In addition, this modular rack system can be used to meet a number of other (stack rack) warehousing requirements.



72" X 72" STACKING TIRE RACK

PRODUCT NUMBER: MSR-7272WM



SPECIFICATIONS	
DIMENSIONS (L x W x H)	72" X 72" X 72" 1830 X 1830 X 1830 mm
TIRE CAPACITY	42 to 63
LOAD CAPACITY	2400 lb. / 1100 kg
MAX. STACKED (OPEN)	4
MAX. STACKED (CLOSED)	20
WEIGHT	172 lb. / 78 kg
COLOUR	Many options



DESCRIPTION MSR-7272WM

The passenger and light truck stacking rack can be used for stacked storage of all types of passenger and light truck tires. The 72" x 72" deck is designed to hold 6 to 9 stacks of 7 or 8 tires, depending on tire diameter. For tires measuring 16" and under, 9 stacks can be stored per pallet, and for tires measuring 17" and over, 6 stacks. This versatile modular warehousing solution is becoming popular because it can hold more tires per square foot than the MSR-6060. The standard wire mesh decking and the fork guides meet many warehouse safety and handling requirements.

LACED TIRE STACKING RACK

PRODUCT NUMBER: MLR

SPECIFICATIONS	
DIMENSIONS (L x W x H)	85" X 48 1/2" X 50" 2159 X 1232 X 1270 mm
TIRE CAPACITY	34 to 50
LOAD CAPACITY	2400 lb. / 1100 kg
MAX. STACKED (OPEN)	6
MAX. STACKED (CLOSED)	20
WEIGHT	126 lb. / 57 kg
COLOUR	Many options



DESCRIPTION MLR

The lacing rack is a storage unit for high volumes of tires, which should be similar or identical since they need to be stored in an interlaced pattern. Interlaced storage saves a significant amount of space. A single rack can hold 34 to 50 tires, depending on tire diameters, and the racks can be stacked 6 high. This warehousing solution offers one of the best space optimization rates. In fact, many tire distribution centres and warehouses use the lacing rack with removable sides on their receiving docks in order to quickly unload tires from trucks. Although it is used mostly for warehousing, this tire rack can also be used to ship high volumes of tires.



WALL-MOUNT TIRE RACK

PRODUCT NUMBER: MWM-66



SPECIFICATIONS		DESCRIPTION MWM-66
DIMENSIONS (L x W x H)	66" X 20 1/2" X 24" 1676 X 521 X 610 mm	The wall-mount rack is a very economical tire storage system specifically manufactured for small numbers of tires. This tire rack can be mounted on a wood or concrete-block wall and holds up to 8 tires with or without rims. The wall-mount tire rack is 66" long, 22.5" deep and can hold tires up to 32" in diameter. The wall-mount allows you to clear your workspace, improve employee ergonomics and maintain a cleaner, better-organized workplace. Customers are increasingly drawn to tidy shops.
TIRE CAPACITY	7 to 8	
LOAD CAPACITY	200 lb. / 90 kg	
WEIGHT	56 lb. / 25 kg	
COLOUR	Red	

TRANSPORT RACK

PRODUCT NUMBER: MTR



SPECIFICATIONS		DESCRIPTION MTR
DIMENSIONS (L x W x H)	96" X 66" X 51" 2438 x 1676 x 1295 mm	The transport rack is designed to move large numbers of tires from place to place or load them into a trailer. The transport rack is very similar to the shipping rack (MSR), but wider. The extra room holds more tires but makes it more difficult to manoeuvre. A 53-foot truck can hold 18 transport racks (9 deep by 2 high). The tires must be interlaced in the transport rack in order to make the most of available vehicle space or warehouse space. They require four times less loading and unloading time than traditional wooden pallets and, according to our customers, it takes one employee just 20 minutes to fully load or unload a 53-foot trailer.
TIRE CAPACITY	50 to 80	
LOAD CAPACITY	2400 lb. / 1100 kg	
MAX. STACKED (OPEN)	4	
MAX. STACKED (CLOSED)	20	
WEIGHT	425 lb. / 193 kg	
COLOUR	Many options	

SHIPPING RACK

PRODUCT NUMBER: MSR



SPECIFICATIONS		DESCRIPTION MSR
DIMENSIONS (L x W x H)	96" X 46" X 51" 2438 X 1143 X 1295 mm	The shipping rack is designed to move large numbers of tires from place to place or load them into trailer. The shipping rack is very similar to the transport rack (MTR), but not as wide, making it easier to move around and reducing space requirements. A 53-foot truck can hold 28 shipping racks (14 deep by 2 high). They require three times less loading and unloading time than traditional wooden pallets and, according to our clients, one employee can load or unload a 53-foot trailer in just 24 minutes. The tires must be interlaced in the shipping rack in order to make the most of available vehicle space or warehouse space.
TIRE CAPACITY	35 to 65	
LOAD CAPACITY	2400 lb. / 1100 kg	
MAX. STACKED (OPEN)	4	
MAX. STACKED (CLOSED)	20	
WEIGHT	345 lb. / 157 kg	
COLOUR	Many options	

ADJUSTABLE TIRE SHELVING

DESCRIPTION

Whether you use shelving to hold your customers' tires or to store new tires, keeping tires on their treads instead of stacking them flat saves a lot of time. The length and width of the rack are the same in the 3-tier, 4-tier and 5-tier tire shelving. Only the height varies from one model to the next. Each tier holds 9 to 11 passenger or light truck tires, for a maximum of 500 lb. per tier. The sectional beams are angled at 45 degrees to properly hold the tires, making it easier to load and unload than with standard pallet racks. The shelves can be adjusted in 1½" increments to suit tire sizes. Floor fasteners, wall brackets and shelving brackets for mounting the tire shelving are included in every box. Putting the heavier tires on the bottom tier makes the employees' job easier.

3-TIER TIRE SHELVING PRODUCT NUMBER: MTS-92



SPECIFICATIONS	
DIMENSIONS (L x W x H)	92" X 18" X 92" 2337 X 457 X 2337 mm
TIRE CAPACITY	27 to 33 (9 to 11 per tier)
LOAD CAPACITY	500 lb. / 227 kg per tier
WEIGHT	72 lb. / 33 kg
COLOUR	Grey

4-TIER TIRE SHELVING PRODUCT NUMBER: MTS-924



SPECIFICATIONS	
DIMENSIONS (L x W x H)	92" X 18" X 120" 2337 X 457 X 3048 mm
TIRE CAPACITY	36 to 44 (9 to 11 per tier)
LOAD CAPACITY	500 lb. / 227 kg per tier
WEIGHT	94 lb. / 43 kg
COLOUR	Grey

5-TIER TIRE SHELVING PRODUCT NUMBER: MTS-925



SPECIFICATIONS	
DIMENSIONS (L x W x H)	92" X 18" X 150" 2337 X 457 X 3360 mm
TIRE CAPACITY	45 to 55 (9 to 11 per tier)
LOAD CAPACITY	500 lb. / 227 kg per tier
WEIGHT	118 lb. / 54 kg
COLOUR	Grey

PARTS INCLUDED FOR THE ADJUSTABLE TIRE SHELVING 3-4-5 TIERS



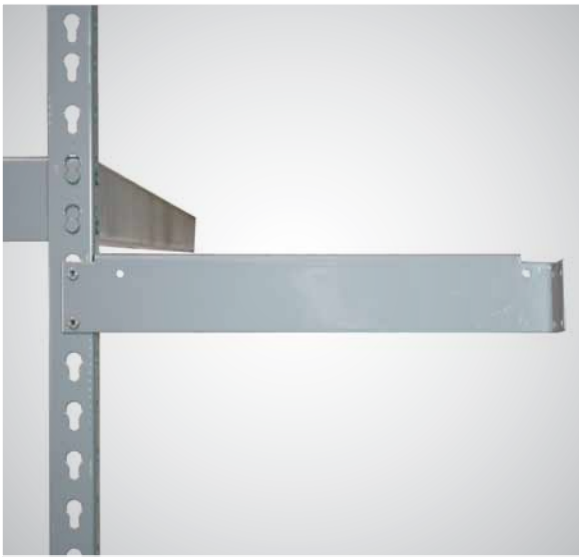
Bolt less installation



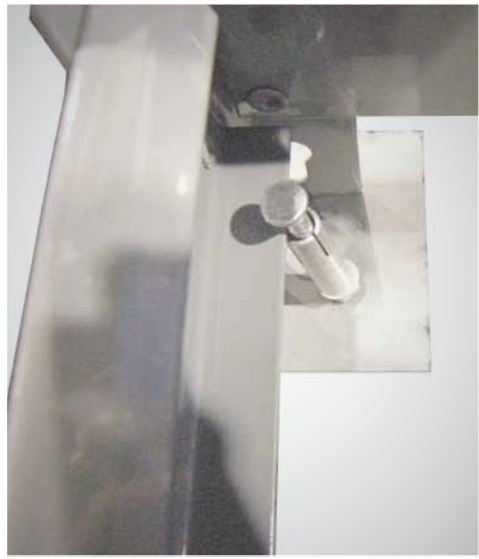
Back to back brackets included



Side by side brackets included



Wall brackets included



Floor anchors included



TIRE RACKING FOR TRUCK, BUS, MILITARY AND AIRCRAFT

- P.15 | TRUCK TIRE FOLDING RACK
- P.15 | HEAVY-DUTY TRUCK TIRE FOLDING RACK
- P.16 | 92" X 40" TRUCK TIRE STACKING RACK
- P.16 | 80" X 80" TRUCK TIRE STACKING RACK
- P.17 | UTILITY TIRE RACK / WHEEL AND RIM RACK



TRUCK TIRE FOLDING RACK

PRODUCT NUMBER: MTFR



SPECIFICATIONS

DIMENSIONS (L x W x H)	93 1/2" X 40" X 54 1/2" 2375 X 1016 X 1384 mm
TIRE CAPACITY	8
LOAD CAPACITY	2400 lb. / 1100 kg
MAX. STACKED (OPEN)	4
MAX. STACKED (CLOSED)	20
WEIGHT	194 lb. / 88 kg
COLOUR	Orange

DESCRIPTION MTFR

The truck tire folding rack is designed specifically for heavy truck, bus and OTR tires. The rack can hold 8 tires measuring up to 44" in outside diameter, when placed on their treads. These tire racks have the same features as the passenger and light truck folding rack (MLTFD). They are modular and foldable, and can be stacked 4 high using a forklift, then reaching a height of 21.5 feet. Their heavy-duty steel construction provides a load capacity of 2400 lb. on each of the 4 stacked racks. When arranged 2 high by 14 deep, the racks fit perfectly into a trailer and can easily be folded down for return shipping.

HEAVY-DUTY TRUCK TIRE FOLDING RACK

PRODUCT NUMBER: MTFR-HD

SPECIFICATIONS

DIMENSIONS (L x W x H)	93 1/2" X 48" X 54 1/2" 2375 X 1219 X 1384 mm
TIRE CAPACITY	8
LOAD CAPACITY	2400 lb. / 1100 kg
MAX. STACKED (OPEN)	4
MAX. STACKED (CLOSED)	20
WEIGHT	290 lb. / 132 kg
COLOUR	Orange

DESCRIPTION MTFR-HD

The heavy-duty truck tire folding rack is designed specifically for heavy truck, bus and OTR tires. The rack can hold 8 tires measuring up to 44" in outside diameter, when placed on their treads. Its heavy-duty steel construction can hold 2400lb on each of the 4 racks when stacked. The heavy-duty truck tire folding rack is very similar to the truck tire folding rack (MTFR), except it is wider and has steel plates along each side. These drop-down steel plates serve as ramps to facilitate loading and unloading of large tires that are often very heavy. The ramps speed up the job and reduce back injuries. The steel plates also serve as a securing system when raised. Perfect for shipping, this ramp system holds the tires in place despite bumps and shakes.



92" X 40" TRUCK TIRE STACKING RACK

PRODUCT NUMBER: MTBR



SPECIFICATIONS

DIMENSIONS (L x W x H)	92" x 40" x 72" 2438 X 1118 X 1803 mm
TIRE CAPACITY	12
LOAD CAPACITY	2400 lb. / 1100 kg
MAX. STACKED (OPEN)	4
MAX. STACKED (CLOSED)	20
WEIGHT	153 lb. / 70 kg
COLOUR	Many options

DESCRIPTION MTBR

The truck tire stacking racks are used for stacked storage of tires for heavy trucks, buses and farm machinery. This versatile and economic modular warehousing solution is very popular in North America. The pallet base is optimized to hold 2 stacks of 6 or 7 tires depending on their diameter. The truck tire stacking rack has the same features as the MSR-6060 or the MSR-8080. It is equipped with four removable corner posts to reduce shipping costs and save space in the tire warehouse during slower periods. When removed, the posts are stowed flat between stacked pallet frames. A forklift with clamps is needed to work with this rack.



80" X 80" TRUCK TIRE STACKING RACK

PRODUCT NUMBER: MSR-8080

SPECIFICATIONS

DIMENSIONS (L x W x H)	80" X 80" X 60" 2032 X 2032 X 1524 mm
TIRE CAPACITY	20
LOAD CAPACITY	2400 lb. / 1100 kg
MAX. STACKED (OPEN)	4
MAX. STACKED (CLOSED)	20
WEIGHT	175 lb. / 80 kg
COLOUR	Many options

DESCRIPTION MSR-8080

The 80" truck tire stacking rack was developed for customers who need to store a large volume of tires for heavy trucks and buses, but also to store big OTR tires for farm and mining machinery, for example. The 80" x 80" deck is optimized to hold 4 stacks of 5 heavy truck and bus tires, or 2 or 3 OTR tires up to 100" in diameter. Big tires are usually stored directly on the floor, stacked 4-6 high. They cannot be stacked higher because of their weight and instability in tall stacks. As a result, this rack can be a very economical and safe way to store big tires. A forklift with clamps is required, and removable posts make it easy to work with the rack.



WHEEL AND RIM RACK

PRODUCT NUMBER: MWR



SPECIFICATIONS

DIMENSIONS (L x W x H)	71 1/2" X 49 1/2" X 68 1/2" 1816 X 1257 X 1740 mm
TIRE CAPACITY	72 to 81
LOAD CAPACITY	2400 lb. / 1100 kg
MAX. STACKED (OPEN)	5
MAX. STACKED (CLOSED)	22
WEIGHT	295 lb. / 134 kg
COLOUR	Many options

DESCRIPTION MWR

The wheel and rim rack has been specially designed for storing wheels and rims vertically. This flexible, mobile storage unit allows you to reduce wheel handling to a minimum and prepare your winter tire orders for mounting on rims. This unit is very similar to the utility tire rack (MUTR). The rack can hold 8 or 9 wheels per row, placed side by side, three rows deep and three rows high. The rack can be folded down to save floor space during slower periods.



UTILITY TIRE RACK

PRODUCT NUMBER: MUTR

SPECIFICATIONS

DIMENSIONS (L x W x H)	71 1/2" X 49 1/2" X 68 1/2" 1816 X 1257 X 1740 mm
TIRE CAPACITY	72 to 81
LOAD CAPACITY	2400 lb. / 1100 kg
MAX. STACKED (OPEN)	5
MAX. STACKED (CLOSED)	22
WEIGHT	295 lb. / 134 kg
COLOUR	Many options

DESCRIPTION MUTR

The utility tire rack was specifically designed for small tires used on vehicles such as ATVs, lawn tractors and golf carts. Tires can be stored 8 or 9 to a row, 3 rows deep and 3 rows high. This portable and stackable rack is very similar to the passenger and light truck folding rack (MLTFD) in that it can be folded down to reduce shipping charges and save floor space during slower periods. When folded, 80% of the storage space is regained and the racks can be stacked 22 high.





TIRE HANDLING EQUIPMENT

- P.19 ORDER PICKING CAGE FOR PCR & SUV TIRES
- P.19 STANDARD ORDER PICKING CAGE FOR PCR & SUV TIRES
- P.20 ORDER PICKING CAGE FOR TRUCK & BUS TIRES
- P.20 TIRE CART
- P.21 MOBILE LADDERS
- P.22 TIRE CONVEYORS
- P.24 DOLLY/STAND FOR TIRE CONVEYORS



ORDER PICKING CAGE FOR PCR & SUV TIRES

PRODUCT NUMBER: MOPC-LT



SPECIFICATIONS

DIMENSIONS (L x W x H)	61" X 42" X 78 1/2" 1549 X 1067 X 1994 mm
TIRE CAPACITY	16 to 25
LOAD CAPACITY	2000 lb. / 909 kg
WEIGHT	310 lb. / 141 kg
COLOUR	Orange

DESCRIPTION MOPC-LT

The passenger and light truck order picking cage provides a safe way for employees to assemble orders. Tire order picking cages are used mainly in tire distribution centres to speed up the job of preparing daily tire orders. The cage is designed to be moved with the fork on a picker lift. Bottom crossbars serve as guides for two rows of tires placed on their treads. Retractable bars can form a second deck in the cage. Some 16 tires can be stored on their treads or, with the four crossbars removed, about 25 can be stored in an interlaced pattern. The tire cage is equipped with a latch system that is specially adapted to work with most picker lifts.

STANDARD ORDER PICKING CAGE FOR PCR & SUV TIRES

PRODUCT NUMBER: MSOPC

SPECIFICATIONS

DIMENSIONS (L x W x H)	50 13/16" X 73 15/16" X 60 11/16" 1290 X 1878 X 1541 mm
TIRE CAPACITY	20 to 30
LOAD CAPACITY	2000 lb. / 909 kg
MAX. STACKED (OPEN)	5
MAX. STACKED (CLOSED)	20
WEIGHT	300 lb. / 136 kg
COLOUR	Orange

DESCRIPTION MSOPC

The standard tire order picking cage is a warehouse solution for picking all types of passenger and light truck tires from racking systems. It is designed to be used in conjunction with an order picker or a forklift. Safety features include anti-slip decking, fork pockets and wood grabber. The cage can hold 5 stacks of 6 tires. The posts are removable to make unloading easier and to save space during slower periods. The cage can also be used for truck tires.



ORDER PICKING CAGE FOR TRUCK & BUS TIRES

PRODUCT NUMBER: MOPC-T



SPECIFICATIONS

DIMENSIONS (L x W x H)	108" X 43 1/2" X 44" 2743 X 1105 X 1118 mm
TIRE CAPACITY	8
LOAD CAPACITY	1500 lb. / 682 kg
WEIGHT	425 lb. / 193 kg
COLOUR	Orange

DESCRIPTION MOPC-T

The heavy truck order picking cage is specially designed to hold tires for trucks, buses, OTR and other heavy vehicles. The picking cage offers a safe way to assemble orders. Designed to be moved with a picker lift and approved for workplace health and safety, this cage provides employees with a hazard-free working environment. A simple mechanism enables the gates along the sides to be raised in two sections. When the gates are up, a ramp lowers to provide easy access to the tires. Up to 8 tires can be placed on their treads, retained by two angle weldings on the base.



TIRE CART

PRODUCT NUMBER: MTC

SPECIFICATIONS

DIMENSIONS (L x W x H)	28 1/2" X 33 1/2" X 65" 724 X 851 X 1651 mm
TIRE CAPACITY	8
LOAD CAPACITY	240 lb. / 109 kg
WEIGHT	125 lb. / 57 kg
COLOUR	Red

DESCRIPTION MTC

The tire cart reduces handling, reduces the number of trips and helps avoid work stoppages and workplace accidents, particularly back injuries. Your employees will greatly appreciate this tool, especially when working with larger, heavier tires.

The tire cart carries passenger and light truck tires from 12" to 35" in diameter and can move 6 to 8 tires at a time. The cart's total width is 28 " when closed. The tire cart manufactured by Martins Industries uses strong and durable 50-psi wheels, which suffer less compression under heavy tire loads. The cart is painted with a red powder-coated finish.

A foot pedal opens the cart's arms. The tire cart then slides under the stack of tires and tips back in the same way as a mover's hand truck. A gas cylinder closes the cart's arms around the tire stack. The tires sit securely in the cart for safe and easy moving.



MOBILE LADDERS

DESCRIPTION

The mobile ladder allows you to load and unload tires from racks and shelving. Ideally, a worker should lift between his shoulders and knees. The 6-step ladder (MML-6) is suitable for reaching the top of the 4-tier tire shelving (MTD-924). The 10-step ladder (MML-10) is better for reaching the top of the 5-tier tire shelving (MTD-925) and other high pallet racking systems.

These ladders are especially useful when tires are stored in inaccessible areas such as narrow aisles or mezzanines where lifts cannot go. The mobile ladders are equipped with a unique stabilization system. The user must pull the ergonomic lever to lower the four wheels and move the stairs, which otherwise rest on a steel base. Other safety features include handrails and grip steps, which comply with standard health and safety regulations.

6-STEP MOBILE LADDER

PRODUCT NUMBER: MML-6



SPECIFICATIONS

DIMENSIONS (L x W x H)	56" x 26" x 94" 1422 x 660 x 2388 mm
PLATFORM HEIGHT	54" / 1372 mm
PLATFORM DEPTH	13" / 330 mm
LOAD CAPACITY	500 lb. / 226 kg
WEIGHT	137 lb. / 62 kg
COLOUR	Blue

10-STEP MOBILE LADDER

PRODUCT NUMBER: MML-10



SPECIFICATIONS

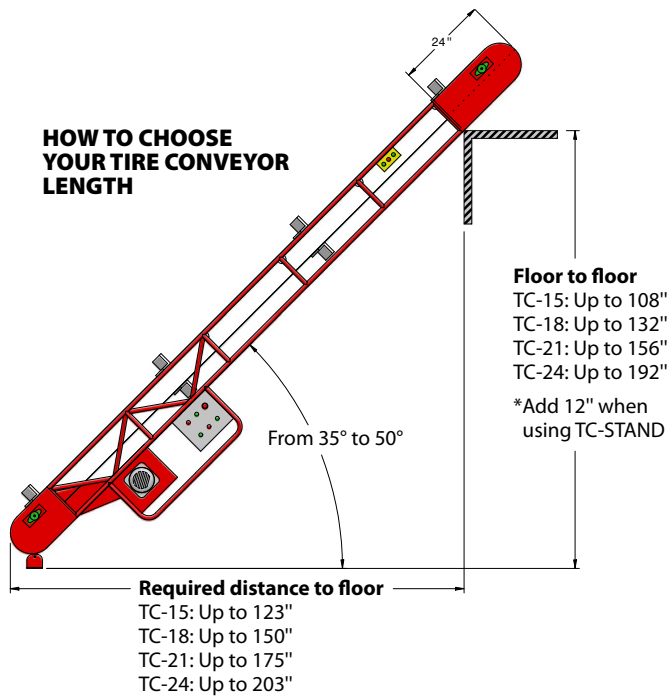
DIMENSIONS (L x W x H)	89" x 36" x 130" 2260 x 914 x 3302 mm
PLATFORM HEIGHT	90" / 2286 mm
PLATFORM DEPTH	20" / 508 mm
LOAD CAPACITY	500 lb. / 226k g
WEIGHT	225 lb. / 102k g
COLOUR	Blue

TIRE CONVEYORS

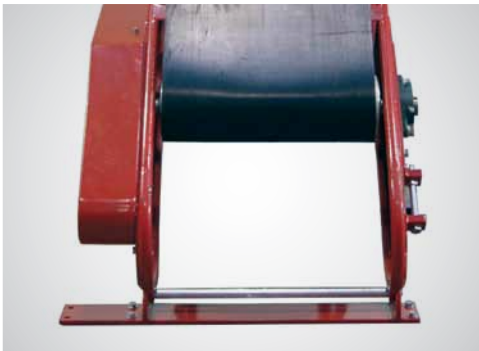
DESCRIPTION

Martins Industries’ tire conveyors are specially designed to move passenger and light truck tires up inclines as steep as 60 degrees. The tire conveyor is the perfect tool to move tires up to or down from a mezzanine. The standard conveyors are manufactured in lengths of 15’, 18’, 21’ and 24’, which most common sizes. We can also manufacture your custom requirements.

The conveyor features a control panel at both end and a steel anchor plate at the bottom for stability. Installation only takes a few minutes: secure the four anchors to the floor or on the conveyor stand and plug the prewired electrical controls into an electrical outlet of 115-Volts or 220Volts depending on the model of conveyor. The cleats on the conveyor belt ensure that tires are held properly. This conveyor prevents the need for dangerous manoeuvres and speeds up tire handling.



CONVEYOR FEATURES



Swivel base



PVC Cleats



Main control box at the bottom of the conveyor



Secondary control box at the top of the conveyor



Tire conveyor motor 1,5HP or 2HP (depending on the conveyor model)



Chain & sprocket guard

15' TIRE CONVEYOR
PRODUCT NUMBER: TC-15



SPECIFICATIONS	
DIMENSIONS (L x W x H)	180" X 21" X 11" / 4 572 X 533 X 280 mm
TIRE CAPACITY	~ 12 tires / minute
LOAD CAPACITY	500 lb. / 230 kg
WEIGHT	750 lb. / 341 kg
COLOUR	Red

18' TIRE CONVEYOR
PRODUCT NUMBER: TC-18



SPECIFICATIONS	
DIMENSIONS (L x W x H)	216" X 21" X 11" / 5486 X 533 X 280 mm
TIRE CAPACITY	~ 12 tires / minute
LOAD CAPACITY	500 lb. / 230 kg
WEIGHT	825 lb. / 375 kg
COLOUR	Red

15', 18' TIRE CONVEYOR KEY FEATURES

WIDTH	21" (450 mm)	BELT	18" x 3/8" – 2 ply (8mm)
ELECTRICITY	115V, 15AMP, 50HZ	SPEED	58 feet/ min
CLEATS	4" high PVC, 60" centre-to-centre	CONTROLS	On / Off / Reverse at each end
BEARING	Sealed precision ball bearing (no maintenance)		
MOTOR	1.5 HP		

21' TIRE CONVEYOR
PRODUCT NUMBER: TC-21



SPECIFICATIONS	
CONVEYOR DIMENSIONS (L x l x H)	250" X 21" X 11" / 6350 X 533 X 279 mm
TIRE CAPACITY	~12 tires / minute
LOAD CAPACITY	500 lb. / 230 kg
WEIGHT	875 lb. / 398 kg
COLOUR	Red

24' TIRE CONVEYOR
PRODUCT NUMBER: TC-24



SPECIFICATIONS	
DIMENSIONS (L x W x H)	288" X 21" X 11" / 7315 X 533 X 279 mm
TIRE CAPACITY	~ 12 tires / minute
LOAD CAPACITY	500 lb. / 230 kg
WEIGHT	957 lb. / 435 kg
COLOUR	Red

21',24' TIRE CONVEYOR KEY FEATURES

WIDTH	21" (450 mm)	BELT	18" x 3 / 8"- 2 ply (8 mm)
ELECTRICITY	220V, 6.59A, 750W, 3 PHASES, 50 HZ	SPEED	58 feet/min
CLEATS	4" HIGH PVC, 60" ON CENTER	CONTROLS	On / Off / Backwards at each end
BEARING	Sealed precision ball (no maintenance)		
MOTOR	2 HP		

DOLLY/STAND FOR TIRE CONVEYOR

DESCRIPTION

The two models of stand / dolly for tire conveyor are used to move the different models of tire conveyors. The same product is adapted to receive the 2 models (15' & 18' or 21' & 24') The stand makes it easy to manipulate the tire conveyor and allows, when the tire conveyor is not in use, to move it along the wall in order to save space. The dolly / stand for the tire conveyor is adjustable to allow you to fit to the height of your mezzanine. In addition, the dolly for the tire conveyor allows you to gain height therefore making it easier for your employees to work. It is needed to move the tire conveyor because the tire conveyor does not have wheels because it is usually fix to the ground. It makes it simple for your employees when the time comes to move the conveyor. You only need to fix the base of the tire conveyor on the dolly and adjust the angle of the dolly to the height of your mezzanine then lock the brakes on the two wheels before using the conveyor.

DOLLY/STAND FOR 15', 18' TIRE CONVEYOR

PRODUCT NUMBER: TC-STAND-1518

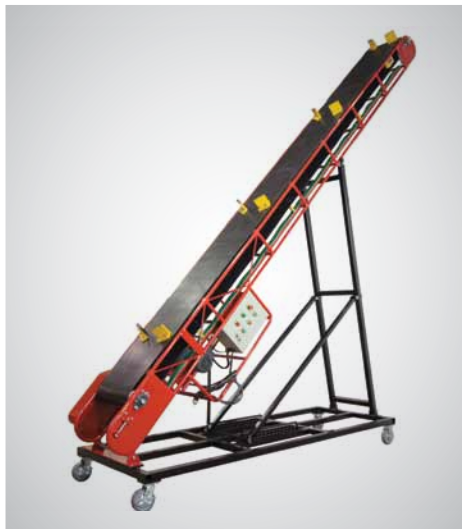


SPECIFICATIONS

DIMENSIONS	108-3/4" X 40" X 107-13/16"
(L x l x H)	2768 X 1 016 X 2743 mm
WEIGHT	250 lb. / 113 kg
COLOUR	Black

DOLLY/STAND FOR 21', 24' TIRE CONVEYOR

PRODUCT NUMBER: TC-STAND-2124



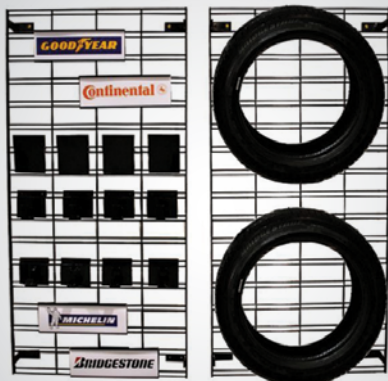
SPECIFICATIONS

DIMENSIONS	154-3/32" X 40" X 156-9/16"
(L x l x H)	3912 X 1 016 X 3988 mm
WEIGHT	300 lb. / 136 kg
COLOUR	Black



TIRE AND WHEEL DISPLAYS

STANDARD TIRE DISPLAY ON WHEELS	P.26
DELUXE TIRE DISPLAY ON WHEELS	P.26
3-TIER TIRE DISPLAY ON WHEELS	P.27
DOLLY FOR TIRE DISPLAY	P.27
4-TIRE DISPLAY ON WHEELS	P.28
PLASTIC TIRE STAND	P.28
WHEEL DISPLAY	P.28
DELUXE SHOWROOM DISPLAY	P.29
STANDARD SHOWROOM DISPLAY	P.29
WALL GRID DISPLAY	P.30



STANDARD TIRE DISPLAY ON WHEELS

PRODUCT NUMBER: MTD-60



SPECIFICATIONS

DIMENSIONS (L x W x H)	64 1/2" X 26 1/2" X 76 1/2" 1638 X 673 X 1943 mm
TIRE CAPACITY	12 to 14
LOAD CAPACITY	600 lb. / 273 kg
WEIGHT	80 lb. /36 kg
COLOUR	Black



DESCRIPTION MTD-60

The standard tire display is 60" long and holds up to 6 or 7 tires on each of 2 tiers. With two wheels and two steel feet, this rack requires the display truck (MD) to be moved.

3-TIER TIRE DISPLAY ON WHEELS

PRODUCT NUMBER: MTD-3T



SPECIFICATIONS

DIMENSIONS (L x W x H)	64 1/2" X 58" X 89" 1638 X 1473 X 2261 mm
TIRE CAPACITY	18 to 21
LOAD CAPACITY	800 lb. / 363 kg
WEIGHT	157 lb. / 71 kg
COLOUR	Black



DESCRIPTION MTD-3T

The 3-tier tire display is 60" long and can hold up to 21 tires, 6 or 7 per tier. This model is an adaptation of the MTD-60. It has two steel feet and two heavy-duty 10" pneumatic wheels, and requires the hand truck dolly (MD) to be moved.

DELUXE TIRE DISPLAY ON WHEELS

PRODUCT NUMBER: MTD-72

SPECIFICATIONS

DIMENSIONS (L x W x H)	77" X 26 1/2" X 89" 1956 X 673 X 2261 mm
TIRE CAPACITY	14 to 16
LOAD CAPACITY	500 lb. / 227 kg
WEIGHT	110 lb. / 50 kg
COLOUR	Black



DESCRIPTION MTD-72

The deluxe tire display is 72" long and holds up to 16 tires – 7 or 8 on each of 2 tiers. With two swivel wheels and two fixed wheels, it can be moved without the display truck (MD). A blank, black sign plate on top of the rack is provided to improve the exposure of your brand or product.



DOLLY FOR TIRE DISPLAY

PRODUCT NUMBER: MD

SPECIFICATIONS

DIMENSIONS (L x W x H)	8" X 11" X 43 1/2" 203 X 279 X 1105 mm
WEIGHT	11 lb. / 5 kg
COLOUR	Black



DESCRIPTION MD

This tire display dolly is used to move MTD-60, MTD-72 and MTD-3T display units. It serves as both a handle and a lever for moving and guiding these rolling tire racks outside and inside.



4-TIRE DISPLAY ON WHEELS

PRODUCT NUMBER: MFTD



SPECIFICATIONS		DESCRIPTION MFTD
DIMENSIONS (L x W x H)	38" X 27" X 44" 965 X 685 X 1117 mm	This display can hold 3 tires below the name-plate (vertically or laid flat) and 1 above it. There is a space of 30.5" between the lower and upper tubes to place the tires flat, and 30" between the two lower tubes to place the tires on their treads. Using the handles, the display can be easily moved, even when loaded with tires. However, it is better to move the rack without the fourth tire on top.
TIRE CAPACITY	4	
WEIGHT	45 lb. / 20.5 kg	
COLOUR	Silver	

PLASTIC TIRE STAND

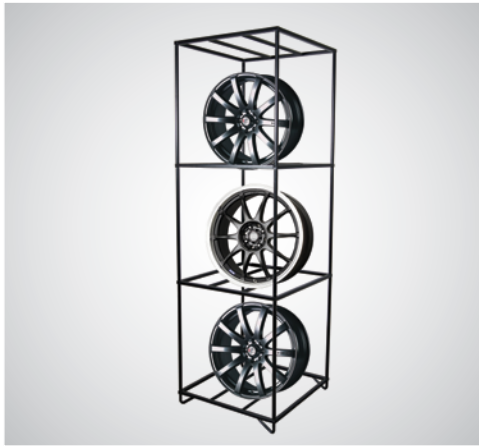
PRODUCT NUMBER: MPTS



SPECIFICATIONS		DESCRIPTION MPTS
DIMENSIONS (L X W X H)	13-1/2" X 9-3/4" to 16-1/4" X 4" 3/4 343 X 248 to 413 X 121 mm	The plastic tire stand is used to display your tires and your wheels to catch the attention of your customers in a fast and effective way. The plastic tire stand is sturdy and requires little maintenance; you only need to keep it clean to catch the eye. It is perfect to display one particular tire. You only need to encase the two plastic sections of the tire stand and to put in the tire you wish to present. The stand is adjustable from 9-3/4" (248mm) to 16-3/4" (413mm) to fit any size of tire and it will even fit truck tires.
TIRE CAPACITY	1	
WEIGHT	1 lb. / 0.45 kg	
COLOUR	Black	

WHEEL DISPLAY

PRODUCT NUMBER: MWD



SPECIFICATIONS		DESCRIPTION MWD
DIMENSIONS (L x W x H)	26" X 26" X 83" 660 X 660 X 2108 mm	The wheel display will hold up to 8 wheels, i.e. 2 per tier back to back. The wheels can be as much as 25" in diameter and 12" wide. It is easy to move and assemble; it only takes a few minutes. Place it in plain sight and keep it clean to enhance your products.
WHEEL CAPACITY	8	
LOADING CAPACITY	220 lb. / 100 kg	
WEIGHT	45 lb. / 21 kg	
COLOUR	Black	

DELUXE SHOWROOM DISPLAY

PRODUCT NUMBER: MSTD



SPECIFICATIONS	
DIMENSIONS (L x W x H)	35" X 33 1/2" X 97" 889 X 851 X 2464 mm
TIRE CAPACITY	8
LOAD CAPACITY	225 lb. / 102 kg
WEIGHT	132 lb. / 60 kg
COLOUR	Red or black

DESCRIPTION MSTD	
The deluxe showroom display is an elegant stand that holds 8 tires measuring up to 29" in diameter. Five individual holders each accommodate one tire, laid flat, measuring up to 27" in diameter. With the tires positioned in this way, the customer can easily examine the treads. An information strip can be inserted for the brand in question. The deluxe showroom display includes a total of 13 information strips (23" x 2") for the most popular tire brands. Three more tires up to 29" in diameter can be placed at the bottom of the display. Two white sign plates measuring 31 3/4" x 6" can be used to show your logo or other emblem at the top and bottom of the tire display.	

STANDARD SHOWROOM DISPLAY

PRODUCT NUMBER: MSSD

SPECIFICATIONS	
DIMENSIONS (Diameter x H)	33" X 93 1/2" 838 X 2375 mm
TIRE CAPACITY	6
LOAD CAPACITY	250 lb. / 114 kg
WEIGHT	30 lb. / 14 kg
COLOUR	Silver

DESCRIPTION MSSD	
This economical tire display holds 6 tires. Because of its height, it uses very little floor space – just four square feet. The tires are suspended on display hooks placed in strategic positions. The base of this tire display consists of three legs made of laser-cut steel for increased accuracy and stability. There is a clip at the top of the display that can be used to hold a nameplate with your logo or a message. The nameplate is not included. The standard display holds tires measuring up to 29" in outside diameter.	



WALL GRID DISPLAY

DESCRIPTION

These wall grids come in 3 different kits. The complete set (MWG-2448-KIT) includes 2 wall grids measuring 24" x 48", 4 tire hooks, 4 wheel hooks, 4 brochure holders and 4 tire brand logo strip holders, along with 13 different tire brand logo strips. This kit can accommodate 2 tires or wheels. Pairs of grids (MWG-2448-G) and hook sets (MWG-2448-H) can be purchased separately. The hooks can be used with slatwall panels or mounted directly on the wall. The grids and hooks can also be used for other automotive parts.

GRID DISPLAY WITH HOOKS PRODUCT NUMBER: MWG-2448-KIT



SPECIFICATIONS	
INCLUDES	2 grids measuring 24" X 48", 4 tire hooks, 4 wheel hooks, 4 flyer holders, 4 logo holders and 13 logo strips.
TIRE CAPACITY	2
WEIGHT	51 lb. / 23 kg
COLOUR	Black

GRID DISPLAY PRODUCT NUMBER: MWG-2448-P



SPECIFICATIONS	
INCLUDES	2 grids measuring 24" X 48"
TIRE CAPACITY	2
WEIGHT	36 lb. / 16 kg
COLOUR	Black

HOOK SET PRODUCT NUMBER: MWG-2448-H



SPECIFICATIONS	
INCLUDES	4 tire hooks 4 wheel hooks, 4 flyer holders, 4 logo holders 13 logo strips.
TIRE CAPACITY	2
WEIGHT	20 lb. / 9 kg
COLOUR	Black



INFLATION CAGE AND EQUIPMENT

PORTABLE INFLATION CAGES	P.32
3, 4 AND 5 BAR INFLATION CAGES	P.33
OTR INFLATION CAGE	P.34
PCR INFLATION CAGE	P.34
INFLATION CAGE ROLLER KIT	P.34
STAND FOR AUTOMATIC TIRE INFLATOR	P.35
TIRE TOOL STAND	P.35
AUTOMATIC TIRE INFLATORS	P.36
AUTOMATIC HD INFLATION CAGES	P.37
OTR & MINING TIRES AUTOMATIC HD INFLATION CAGES	P.38



PORTABLE INFLATION CAGES

DESCRIPTION

The portable inflation cage is often used by road service vehicles for changing and inflating tires on trucks, buses, military vehicles, etc. This light, compact yet sturdy inflation cage is manufactured in our Canadian plant using steel that meets the toughest standards in North America. The portable inflation cage folds down to a depth of only 6", making it very easy to stow in your service truck. These safety cages, a mandatory precaution for tire inflation, provide good protection and exceed the requirements of OSHA Standard 29 CFR 1910.177 in the U.S. Before using the portable inflation cage, please read the instructions carefully.

2-BAR PORTABLE INFLATION CAGE

PRODUCT NUMBER: MIC-2



SPECIFICATIONS

DIMENSIONS (L x W x H)	21 1/2" X 17" X 52" 546 X 432 X 1321 mm
MAX. TIRE SIZE	48" OD X 15" W 1219 mm OD X 381 mm W
WEIGHT	69 lb. / 31 kg
COLOUR	Orange

2-BAR WIDE-BASE PORTABLE INFLATION CAGE

PRODUCT NUMBER: MIC-2WB



SPECIFICATIONS

DIMENSIONS (L x W x H)	29" X 16 3/4" X 52" 736 X 425 X 1321 mm
MAX. TIRE SIZE	48" OD X 21" W 1219 mm OD X 533 mm W
WEIGHT	73 lb. / 33 kg
COLOUR	Orange

3, 4 AND 5 BAR INFLATION CAGES

DESCRIPTION

The 3-bar, 4-bar and 5-bar tire inflation cages are used for changing and inflating tires for trucks, buses, military vehicles, etc. These truly heavy-duty inflation cages are manufactured in our Canadian plant using steel that meets the toughest standards in North America. These safety cages, a mandatory precaution for tire inflation, provide good protection and exceed the requirements of OSHA Standard 29 CFR 1910.177 in the U.S. The steel tubing size and powder-coated paint are superior to our competitors' products. Before using the tire inflation cage, please read the instructions carefully.

3-BAR INFLATION CAGE

PRODUCT NUMBER: MIC-3

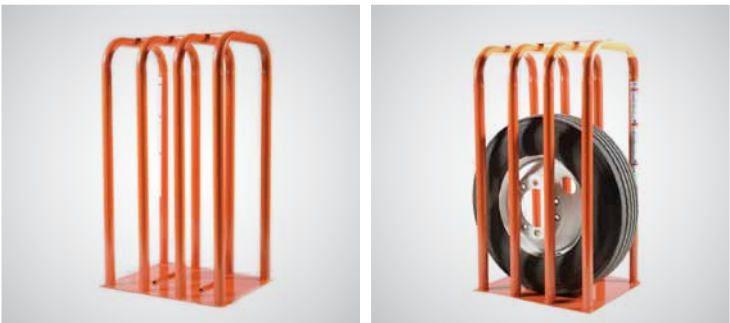


SPECIFICATIONS

DIMENSIONS (L x W x H)	22" X 26" X 57" 559 X 660 X 1448 mm
MAX. TIRE SIZE	54" OD X 20" W 1371 mm OD X 508 mm W
WEIGHT	106 lb. / 48 kg
COLOUR	Orange

4-BAR INFLATION CAGE

PRODUCT NUMBER: MIC-4



SPECIFICATIONS

DIMENSIONS (L x W x H)	32" X 26" X 57" 813 X 660 X 1448 mm
MAX. TIRE SIZE	54" OD X 20" W 1371 mm OD X 508 mm W
WEIGHT	140 lb. / 64 kg
COLOUR	Orange

5-BAR INFLATION CAGE

PRODUCT NUMBER: MIC-5



SPECIFICATIONS

DIMENSIONS (L x W x H)	41" X 26" X 57" 1041 X 660 X 1448 mm
MAX. TIRE SIZE	54" OD X 20" W 1371 mm OD X 508 mm W
WEIGHT	183 lb. / 83 kg
COLOUR	Orange

OTR INFLATION CAGE

PRODUCT NUMBER: MIC-OTR



SPECIFICATIONS		DESCRIPTION MIC-OTR
DIMENSIONS (L x W x H)	41" X 39 1/2" X 68" 1041 X 1003 X 1727 mm	The OTR tire inflation cage is used to inflate tires for trucks, military vehicles, tractors and aircrafts. Our tire inflation cages are the strongest on the market. They are built with 2" steel tubing – 6% larger than our competitors' tubing – welded to a 3/16" steel base with added reinforcements. These safety cages, a mandatory precaution for tire inflation, provide good protection and exceed U.S. federal OSHA Standard 29 CFR, 1910.177.
MAX. TIRE SIZE	62" OD X 33" W 1574 mm OD X 838 mm W	
WEIGHT	293 lb. / 133 kg	
COLOUR	Orange	

PCR INFLATION CAGE

PRODUCT NUMBER: MIC3-PCR



SPECIFICATIONS		DESCRIPTION MIC3-PCR
DIMENSIONS (L x W x H)	21" X 28" X 40" 534 X 711 X 1016 mm	The passenger and light truck inflation cage is used to inflate tires for SUV, small vehicles, minivans etc. This cage is specially equipped with foam to prevent scratches and damages on your wheels. These safety cages, a mandatory precaution for tire inflation, provide good protection and exceed U.S. federal OSHA Standard 29 CFR, 1910.177. Our tire inflation cages are the strongest on the market. The cages are finished with powder coating baked at 400°F for superior durability and quality.
MAX. TIRE SIZE	37" OD X 21" W 939 mm OD X 533 mm W	
WEIGHT	95 lb. / 43 kg	
COLOUR	Orange	

INFLATION CAGE ROLLER KIT

PRODUCT NUMBER: MIC-ROLLER



SPECIFICATIONS		DESCRIPTION MIC-ROLLER
DIMENSIONS (L x W x H)	15" x 15" x 2" 381 x 381 x 51 mm	The inflation cage roller kit is used to rotate the tires easily and without any effort directly into the inflation cage, giving you an easy access to the valve. The inflation cage roller kit is made to be used with Martins Industries' different types of cages such as MIC-3, MIC-4, MIC-5 and MIC-OTR. The MIC-ROLLER is equipped with 2 sturdy rolls that can support a total of 450lb and is finished with powder coated paint.
LOAD CAPACITY	450 lb. / 204 kg	
WEIGHT	12 lb. / 6 lb.	
COLOUR	Orange	

STAND FOR AUTOMATIC TIRE INFLATOR

PRODUCT NUMBER: MW-STAND



SPECIFICATIONS	
DIMENSIONS (L x l x H)	10-11/16" x 4" x 8-15/16" 279 X 102 X 229 mm
WEIGHT	8 lb. / 3.6 kg
COLOUR	Orange

DESCRIPTION MW-STAND	
The automatic tire inflator stand is used to support the tire inflator directly on the inflation cage. The stand can be used with all of our different automatic tire inflators that are MW-60, MW60-4way and the MW-64HP. The stand is needed to fix the automatic tire inflator directly on the tire inflation cage which makes it easier to inflate tires. In addition, it reduces movements and allows to inflate tires faster. The automatic tire inflator stand can fit on many types of inflation cages such as Martins Industries MIC-3, MIC-4, MIC-5 and MIC-OTR but also on our competitors smaller inflation cage tubes.	

TIRE TOOL STAND

PRODUCT NUMBER: MTTS

SPECIFICATIONS	
DIMENSIONS (L x l x H) - Complete stand	27-1/8" x 10-1/4" x 60-1/2" 686 mm X 286 mm x 1537 mm
DIMENSIONS (L x l x H) - Bottom section only	27-1/8" x 10-1/4" x 36-3/4" 686 mm X 286 mm x 933 mm
WEIGHT - complete stand	35 lb. / 16 kg
WEIGHT - bottom section only	25 lb. / 11 kg
COLOUR	Orange
INCLUDES	Tool tray Impact gun cradles Automatic tire inflator - only included with the top part - second photo

DESCRIPTION MTTS	
Martins Industries tire tool stand reduces the number of trips by having all tools needed at your fingertips. It will be your technicians' best helper. The tire tool stand/station will give you an easy and fast access to all those tools you need quickly when changing tires such as: torque-sockets, valve stem pullers, hub cap tools, air impact guns and torque sticks. Having Martins Industries' tire tool stand in your shop will allow you to reduce installation time, give an easy access to tools for 2 technicians, make tire changing easier and have working stations more organized. The tire tool stand is available in 2 ways either the tool base stand and the automatic tire inflator stand (second photo) or only the tool base (first photo).	



AUTOMATIC TIRE INFLATORS

DESCRIPTION

Reliable and sturdy, the automatic tire inflators are fabricated to meet international standards, to inflate tires of trucks, tractors, military vehicles and planes. With its adjustable air pressure, its automation, its ringtone and its LCD screen, the automatic tire inflator facilitates and secures the inflation of tires. The automatic tire inflators are equipped with an input and output, an exhaust and a memory that retains calibration data. It can measure the air pressure with 3 types of unit of measurement that are PSI, BAR and kPA. The reading accuracy is only 2 PSI/ 0,1 BAR.

MW-60 AUTOMATIC TIRE INFLATOR 150PSI X 1 OUTLET

PRODUCT NUMBER: MW-60



SPECIFICATIONS

DIMENSIONS (L x l x H)	9" x 10,5" x 3,5" 230 X 270 X 85 mm
WEIGHT	12 lb. / 5.5 kg
COLOUR	Blue
MAX AIR PRESSURE	150 PSI / 10,3 BAR
DEBIT	2,12CFM

MW60-4WAY AUTOMATIC TIRE INFLATOR 150PSI X 4 OUTLET

PRODUCT NUMBER: MW60-4WAY



SPECIFICATIONS

DIMENSIONS (L x l x H)	9" x 10,5" x 3,5" 230 X 270 X 85 mm
WEIGHT	22 lb. / 10 kg
COLOUR	Blue
MAX AIR PRESSURE	150 PSI/ 10,3 BAR
DEBIT	2,12 CFM
INCLUDES	4 hoses

MW-64HP AUTOMATIC TIRE INFLATOR 195PSI X 1 OUTLET

PRODUCT NUMBER: MW-64HP



SPECIFICATIONS

DIMENSIONS (L x l x H)	9" x 10,5" x 3,5" 230 X 270 X 85 mm
WEIGHT	12 lb. / 5.5 kg
COLOUR	Yellow
MAX AIR PRESSURE	195 PSI /13,4 BAR
DEBIT	2,12 CFM

AUTOMATIC HD INFLATION CAGES

DESCRIPTION

The heavy duty tire inflation cage is used to inflate tires for trucks, military vehicles, tractors and aircrafts. The MIC-AUHD models are specially equipped with an automatic tire inflator to make the cage even safer. You can inflate up to 195PSI with the high pressure inflator and 150PSI with the standard inflator. The MIC-AUHD are equipped, on both of its doors, of a security system that activates or deactivates the inflation of tires. If one of the doors is open the automatic tire inflator will not be activated. You must close the 2 doors properly in order to inflate. Martins Industries heavy duty inflation cage is equipped with an air hose and a wire. Just plug them in and inflate!

AUTOMATIC HD INFLATION CAGE 52" OD

PRODUCT NUMBER: MIC-AUHD52



SPECIFICATIONS

DIMENSIONS (L x W x H)	55-11/16" X 24" X 54" 1422 X 610 X 1372 mm
MAX. TIRE SIZE	52" OD X 19" W 1320 mm OD X 482 mm W
WEIGHT	578 lb. / 263 kg
COLOUR	Orange

AUTOMATIC HD INFLATION CAGE 78" OD

PRODUCT NUMBER: MIC-AUHD78



SPECIFICATIONS

DIMENSIONS (L x W x H)	82" X 40" X 78" 2083 X 1016 X 1982 mm
MAX. TIRE SIZE	76" OD X 35" W 1930 mm OD X 889 mm W
WEIGHT	1150 lb. / 523 kg
COLOUR	Orange

OTR & MINING TIRES AUTOMATIC HD INFLATION CAGE

PRODUCT NUMBER: MIC-AUHD-MINE



SPECIFICATIONS

DIMENSIONS (L x I x H)	135" x 78" x 134" 3400 x 1980 x 3400 mm
MAX TIRE SIZE	115" OD x 48" W 3000 OD x 1,3 W
WEIGHT	6500 lb. / 2955 kg
COLOR	hot dip galvanized

DESCRIPTION MIC-AUHD-MINE

The largest inflation safety cage ever built in the world, this monster cage can handle tires with diameter of up to 115" (3 meters). Mining & OTR tires ranging from 24.00R49 to 45/65R/45 and even 30.00R51. The cage itself weight more than 6 500 lbs (3000 kg). Hot dip galvanized, this cage is manufactured to withstand temperature ranging from -30° to +50 ° Celsius (-22° Fahrenheit to 122° Fahrenheit). The MIC-AUHD-MINE is specially equipped with an automatic tire inflation system to make the cage even safer. It is also equipped with a safety system on its doors that activates or deactivates the inflation of tires; You must close the 2 doors properly in order to inflate, if the doors are not shut properly, the tire will not inflate. In addition, the cage is also equipped with a tire cradle to easily, rapidly and safely handle your tires. This heavy-duty inflation cage is manufactured in our Canadian plant using steel and components that meets and exceeds the toughest standards in the world.



GIVES YOUR TIRE SHOP
A NEW DIMENSION

BENEFITS OF HAVING A WHEEL WASHER

- More profits
- Competitive advantage by offering a complete service
- Customer retention
- Higher customer satisfaction
- More precise wheel balancing
- Cleaner work area
- Environmentally friendly



AUTOMATIC
WHEEL WASHER

- DELUXE AUTOMATIC WHEEL WASHER | P.40
- DOLLY FOR WHEEL WASHER | P.42
- CART FOR CARRYING WHEELS TO WHEEL WASHER | P.42



DELUXE AUTOMATIC WHEEL WASHER

PRODUCT NUMBER: MWW-650



SPECIFICATIONS	
DIMENSIONS (L x W x H)	43 3/4" X 39 1/4" X 56 1/2" 1109 X 935 X 1435 mm
TIRE WIDTH (MIN-MAX)	5 1/4" to 12 3/4" 135 mm to 325 mm
TIRE DIAMETER (MIN-MAX)	22" to 33-1/2" 560 mm to 800 mm
MAX. TIRE WEIGHT	77 lb. / 35 kg
WEIGHT	396 lb. / 180 kg
COLOUR	Charcoal
ELECTRICAL	208-240 Volts, 3Ph., 30Amps
TIRE DIAMETER	33'

DESCRIPTION MWW-650

The deluxe wheel washer is ideal if you have high demand but little space. Suitable for all wheels, this compact machine can be placed anywhere in the shop since it works with a closed water system. The deluxe wheel washer has internal movable side supports for better and faster cleaning. The MWW-650 has 4 different washing programs which are 30, 60, 90 and 120 secondes. It is as easy to install and requires only plastic beads and water.



Control pannel



Drain hose for the water



Motor and electric system



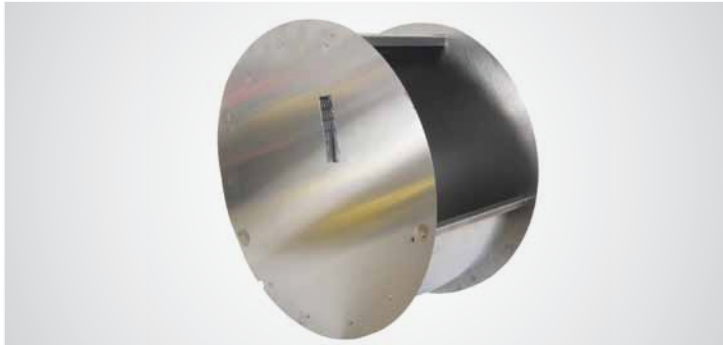
Inside the MWW-650: system to wash your wheels

DELUXE AUTOMATIC WHEEL WASHER

PRODUCT NUMBER: MWW-650

OPERATION COST				
Description	Units	Quantity per wash	Price per Unit	Total
Water per wash	Liter	1	0,0003959 \$	0,0003959 \$
Electricity per wash	KWH	0,1	0,068350 \$	0,0068350 \$
Plastic Beads	Units	1	0,12 \$	0,12 \$
Compressed Air	KWH	0,02	0,068350 \$	0,0013670 \$
Labour	\$ / Hour	0,03	15,00 \$	0,51 \$
Benefits on Labour	\$ / Hour	0,03	1,80 \$	0,082 \$
				Total: 0,72 \$

REVENUES					
Cars per day	cost per wheel	Revenues per wheel	Profits per wheel	Profit per day	Annual Profit
12	0,72 \$	5,00 \$	4,28 \$	205,44 \$	53 414,40 \$
10	0,72 \$	5,00 \$	4,28 \$	171,20 \$	44 512,00 \$
7	0,72 \$	5,00 \$	4,28 \$	119,84 \$	31 158,40 \$
5	0,72 \$	5,00 \$	4,28 \$	85,60 \$	22 256,00 \$
3	0,72 \$	5,00 \$	4,28 \$	51,36 \$	13 353,60 \$



Basket to collect the plastic beads



Before



2 types of plastic beads Blue: Dislodge dirt White: Act like a sponge



After

DOLLY FOR WHEEL WASHER

PRODUCT NUMBER: MWW-650-D

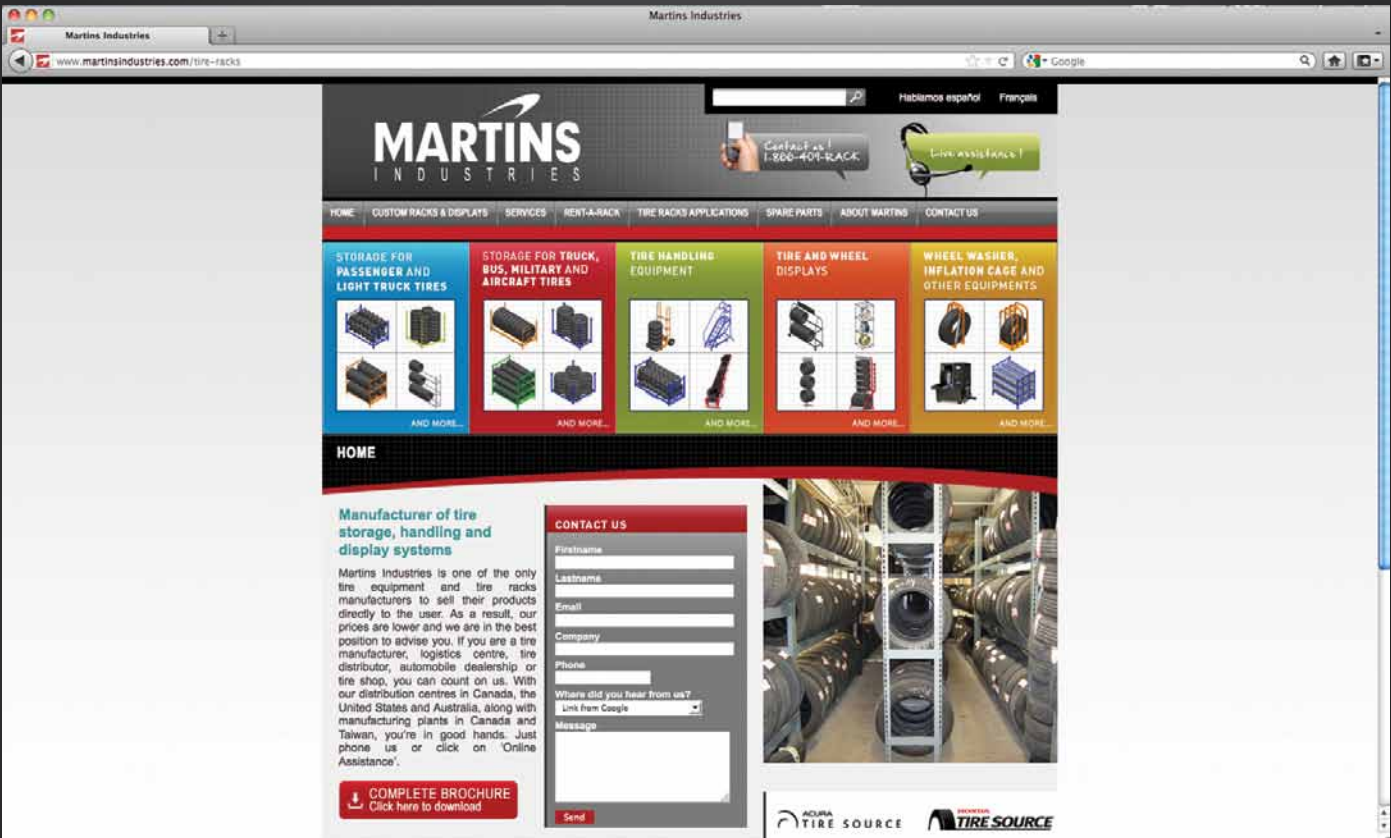


SPECIFICATIONS

DIMENSIONS (L x L x H)	42-1/2" X 37-1/2" X 6-3/16" 1080 X 953 X 157 mm
WEIGHT	115 lb. / 52 kg
COLOUR	Black

DESCRIPTION MWW-650-D

This wheel washer dolly is used to move the wheel washer (MWW-650). It makes it easy to move the machine to the drain when emptying the water of wheel washer. The dolly makes the job easier for your employees when it comes to move the wheel washer. Fast and easy steps are required to use the dolly correctly; simply put the wheel washer on the dolly with the brakes locked, then fill the machine with water and when the time comes to empty the water just unlock the brakes and roll the machine to the drain. This dolly is built with steel and finished with a powder-coated paint and equipped with two swivel wheels of 4" and two fix wheels of 4". The dolly is also equipped with two heavy-duty floor locks.



CART FOR CARRYING WHEELS TO WHEEL WASHER

PRODUCT NUMBER: MWW-650-C

SPECIFICATIONS

DIMENSIONS (L x L x H)	51" x 20" x 41" 1296 x 508 x 1042 mm
TIRE CAPACITY	4 tires
LOAD CAPACITY	300 lb. / 136 kg
WEIGHT	120 lb. / 55 kg
COLOUR	Black

DESCRIPTION MWW-650-C

This wheel washer cart to carry tires to the wheel washer is made to transport more easily and more efficiently the tires to the wheel washer. It also helps to minimize the risks of injuries when carrying the wheels. The dolly makes the job easier for your employees when it comes to move the wheels. The MWW-650-C cart is adjustable. When your wheel washer is fixed to a wheel washer dolly MWW-650-D you only need to adjust the bar to the highest position. If your wheel washer is not equipped with the wheel washer dolly simply adjust the bar to the lowest level. This facilitates the handling of the tires into the wheel washer.



FOR MORE INFORMATIONS, VISIT US ONLINE AT
WWW.MARTINSINDUSTRIES.COM/TIRE-RACKS

- Buy online and see promotions
- Live assistance with our technicians
- Blog on industry trends
- Information about regulations
- Product data sheets
- And more...

PRODUCT VIDEOS





MARTINS
INDUSTRIES

1.866.409.RACK WWW.MARTINSINDUSTRIES.COM
info@martinsindustries.com



Memphis, USA
450-293-9000
1-866-409-7225

Montreal, Canada
450-293-9000
1-866-409-7225

Sydney, Australia
0418 255 745